



- All Model Years
- Lifted
- Standard

NEXUS USER MANUAL



(866) 542-8677



support@bintelli.com

Introduction

Thank you for choosing Bintelli Electric Vehicles, welcome to the family. Your comfort and safety are very important to us, we strongly recommend that you read and follow the operating instructions in this manual, to avoid serious personal injury. Please make sure anyone operating your vehicle is familiar with the cart's functions.

Bintelli continually seeks advancements in product design and quality, therefore, while this manual contains the most current product information, please keep in mind there may be minor discrepancies between your actual golf cart and this manual. If you have any questions about your vehicle, please contact us or an authorized Bintelli dealership.

Security Statements

Please pay close attention to the statements marked as “**Warning**”, “**Danger**”, and “**Caution**”. If any operating or safety warning sign on the vehicle is damaged, peeling, or blurred, it should be replaced immediately to prevent property damage, personal injury, or death.

This vehicle is limited to a certain number of passengers (including the driver). The number of passengers depends on the specific model, i.e. 2PR, 4PF, 4PR, and 6PR.

Warning

Failure to comply with all safety warnings may cause bodily injury to the vehicle operator and/or passengers.

- Keep the entire body in the vehicle when in motion.
- Do not operate while under the influence of drugs or alcohol.
- Make sure all passengers are securely seated before driving.
- Engage the parking brake when the cart is parked or unattended.

Danger

The batteries in your vehicle are capable of delivering large levels of power that can cause injury and even death. For your safety, never smoke near the vehicle. It should be stored away from sparks or flames. Only use the appropriate charger for your vehicle. When working on or near the battery, always wear eye protection, protective clothing, and gloves.

Operating the Vehicle

Contact your local DMV for rules and regulations regarding who may legally operate the vehicle. Switch the Tow/Run switch to the “Run” position. Make sure the Forward/Reverse switch is switched to Neutral before switching the ignition to “On”. *Do not forget to disengage the parking brake.* Once “On” switch the Forward/Reverse switch to the appropriate position.

Caution

Do *NOT* shift from Forward or Reverse while the vehicle is moving.

Please note your vehicle has regenerative braking and will start slowing down when the accelerator is not pressed.

Exercise caution in areas such as:

- Steep slopes
 - Sharp bends
 - Blind spots
 - Wet or icy ground
-
- Keep your entire body inside the vehicle, keep seated, and hold on while the vehicle is moving.
 - Do not start the vehicle until all occupants are securely seated with seat belts secured
 - Do not start the vehicle until power has been unplugged.
 - Keep your hands on the steering wheel and your eyes on the path you are going.
 - Always back up slowly, and watch the back carefully.
 - Avoid starting or stopping the vehicle suddenly.
 - Avoid turning the steering wheel too sharply at high speed.
 - Always drive slowly up or down any incline.
 - Do not make any modifications or additions which may affect the capacity or safety of the vehicle.

Caution

Children are not allowed to play in the vehicle. Children should be seated between or next to an adult and protected by them when the vehicle is moving.

Vehicle Information

The VIN plate is located on the base of the seat as shown in **Fig. 1**. On a 4-passenger VIN plate is located on the base of the driver side. On the 6-passenger VIN plate is located on the base of the second row of seats.



Chassis Number

The Chassis number (also known as the serial number) is located on the passenger side behind the front wheel. It will be on a suspension of the cart, as pictured in **Fig. 2**



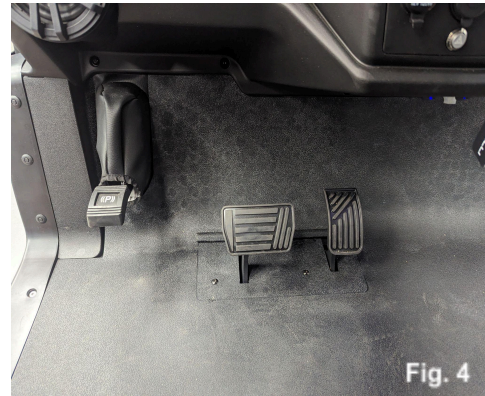
Dash Controls



1. Combination Switch
2. Charging Status Indicator
3. Brake Pedal
4. Accelerator Pedal
5. Locking Glove Box
6. 12v Power Outlet
7. USB Charging Port
8. Ignition Switch
9. Emergency Flasher Switch

Parking Brake

The parking brake is located at the base of the front seat on 6 seat and 4 seat forward facing models, as pictured on **Fig. 3**. To engage the brake, pull up on the lever. To release, push the button in and lower the lever back down. On 4pr models, the parking brake is to the left of the brake pedal, near the bottom of the dashboard, as pictured in **Fig. 4**. To engage, press the pedal down and it will lock in place. To release, press the pedal down once more to disengage the lock.



Beach Chair Holders

The beach chair holders are located on the rear of the cart. All carts with a rear facing back seat have the beach chair holder mounted to the rear grab bar, **Fig. 5**. For forward facing models, it will be mounted on the rear roof support, **Fig. 6**. To open for use, pull the arm up and fold the support arm down to click into place. To close for storage, raise the arm slightly to remove pressure from the support arm. This will allow the support arm to be folded back into place, then fold it down.



Touchscreen Display

The touchscreen display communicates all of your Nexus' vital information, and allows you to control all of the features of your cart, **Fig. 7**.

Home Screen



Fig. 7

1. Display Power Button	14. Multimedia Information Display
2. Volume Up Button	15. Battery Level Indicator
3. Volume Down Button	16. Speedometer
4. Play/Pause/Mute Button	17. Gear Selection Indicator
5. USB and 3.5mm Headphone Jack Under Cover	18. Odometer
6. Turn Signal Indicators	19. Amp Draw/Regenerative Braking Display
7. High Beam Indicator	20. Date, Time, Temperature Display
8. Low Beam Headlight Indicator	21. Diagnostic Code Display
9. Diagnostic Code Indicator	22. Ambient Lighting Power Button
10. Parking Brake Indicator	23. Ambient Lighting Mode Button
11. Battery Warning Indicator	24. Ambient Lighting Color Selection Button
12. Brake Fluid Level Indicator	25. Ambient Lighting Color Selection Button
13. Regenerative Braking Indicator	26. Home Button

Controls and Functions

With the home screen showing on the display, pressing the home button will bring up a menu that will allow you to control the features of your vehicle, **Fig. 8**. Touching these icons will take you to the menus to control the different functions and features included on your new Nexus.



Multimedia Menu

Touching the multimedia icon will display a screen that will cycle through the types of media your Nexus can play, **Fig. 9**. Touching the icons for Bluetooth, USB, Aux input or the radio will activate those inputs. You can also change input type by touching the icon in the lower left corner of the home screen. There are options to play, pause, skip and replay on this screen, as well as artist and track information if the device connected provides it.



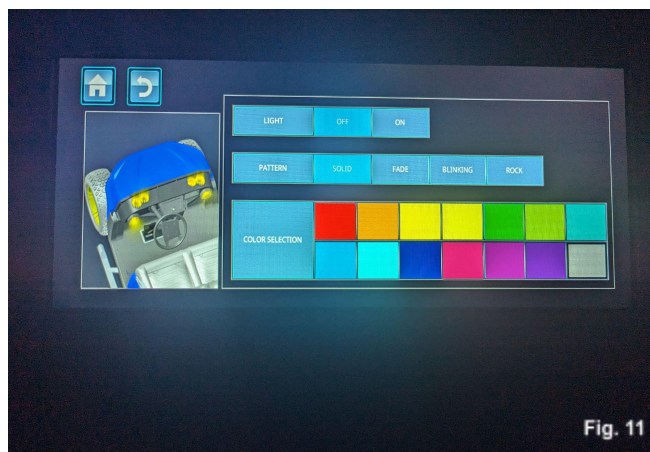
Phone Menu

Touching the phone icon will display a screen that will allow you to make and receive phone calls, **Fig. 10**.



Ambient Light

Touching the ambient light icon will take you to a screen that controls your Nexus' ambient lighting, **Fig. 11**. You can cycle the lights on and off, change modes, and change lighting color through this menu screen. Touch the icons on the screen to make changes.



Vehicle Roof

Touching the vehicle roof icon will display a screen that controls the features of your Nexus' roof, **Fig. 12**. Touch on or off to turn the vehicle's fans and overhead logo lighting on or off, **Fig. 13**. To dim the light, press and hold the on/off button. The dome light mounted above the driver's seat is turned on and off by touching the center of the light. The buttons in the upper left corner will take you to the home screen or back one screen respectively.



Settings

Touching the settings icon will bring up a menu to make changes to your Nexus settings, **Fig. 14**.



Vehicle Settings

Touching the vehicle icon on will display a screen will bring up a menu with options for resetting trip counters, and trip time, **Fig. 15**. The model selection should be set to match the type of Nexus model that it is attached to.

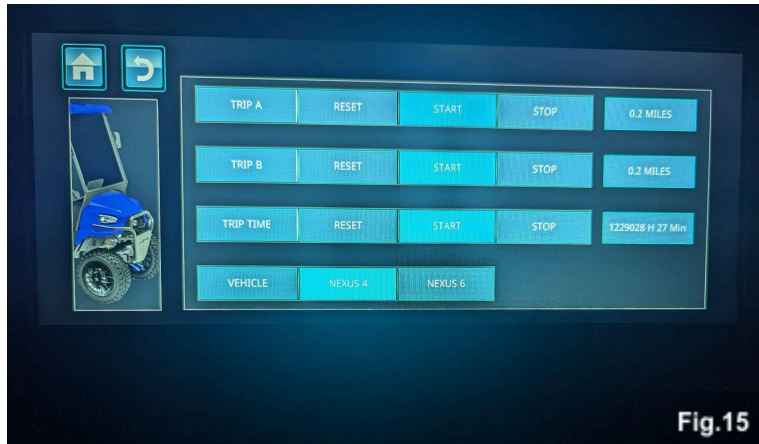


Fig.15

Music EQ

Touching the music EQ icon will bring up a menu to adjust the way that your Nexus stereo sounds, **Fig. 16**. Use the touchscreen to tune the stereo's sound to your personal preference.



Fig.16

Display Settings

Touching the display settings icon will bring up a menu where display settings can be changed. The color options on the top row change the look of the home screen display. Brightness, Language, and units of measure can also be adjusted here.

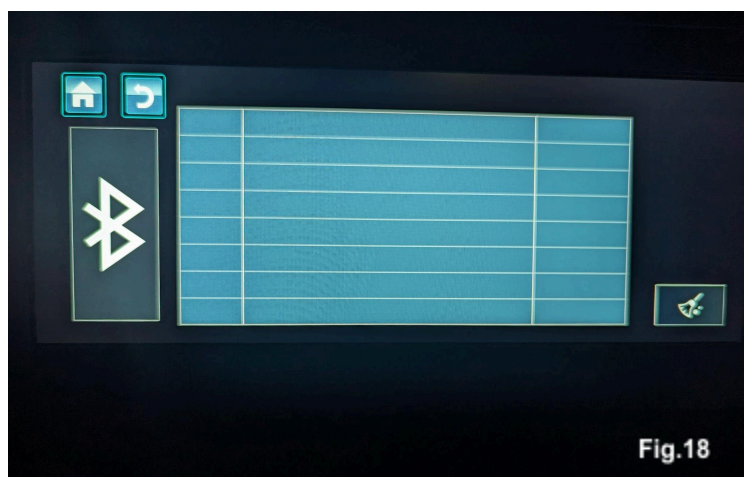
Date and Time

Touching the date and time icon will bring up a menu where time and date settings can be changed and adjusted, **Fig. 17**.



Bluetooth

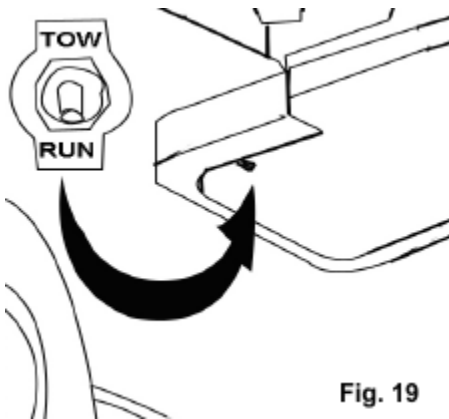
Touching the bluetooth icon will bring up your bluetooth management settings, **Fig. 18**. To connect a bluetooth device, open the bluetooth settings menu on the device you want to connect, scan for devices, and then select NEXUS from the list of available devices. Follow the prompts on your device, and when it is successfully connected the device's name will be displayed on the Nexus screen. Touching the links to the right of the device name will unpair or re-pair that device. To delete previously connected devices from the list, touch the broom icon on the lower right corner of the screen.



Device Information

Touching the device info icon will bring up a screen with Hardware and software version information. This information will be helpful to dealers or service centers for updates.

Tow/Run Switch (Also Off/On Switch)



Before operating the vehicle, make sure the Tow/Run switch is in the "Run" position. When towing or pushing the vehicle flip the switch to the "Tow" position, **Fig. 19**.

Fig. 19

Warning

Pushing or towing the vehicle while in the "Run" position will burn up the motor and the electrical components of the cart. This is a significant fire hazard.

Combination Switch, Fig. 20

- Turn signals
 - Push up to turn on the right turn signal.
 - Push down to turn on the left turn signal.
- Headlights
 - Low beams
 - Pull towards you one click to turn on the low beam lights.
 - High beams
 - Pull towards you a second time to turn on the high beam lights.
- Horn
 - Push in to activate the horn.



Safe Operation Instructions

Our vehicles are designed for simple operations. However, please make sure to observe the following safe operation instructions. As with any new vehicle, always familiarize yourself with its controls. As well as perform checks on the battery, tires (recommended tire pressure is 30 psi), body/chassis, brakes, parking brake, and steering prior to operating the vehicle.

Caution

Always ensure that the key is removed before performing any of the above checks.

- Only authorized people should drive this vehicle, and from the driver's side only.
- Do not drive this vehicle on any public roads before it is registered and has the license plate attached.
- Only drive this vehicle where you are allowed by law or local regulations.
- Do not overload the vehicle, otherwise, the motor may be damaged, or the vehicle will lose control putting the driver and passengers in danger.
- Do not operate the vehicle under the influence of alcohol or drugs.
- Do not attempt to go uphill/slopes beyond its grade ability.
- Do not pass other vehicles at crossroads, blind areas, or any dangerous conditions.
- *ALWAYS* engage the parking brake when getting out of your vehicle.

Storing and Charging

If the vehicle needs to be stored for an extended period of time, perform the following actions:

- Fully charge the battery system
- Turn the "Tow/Run" switch to the "Tow" position
- Turn off battery power with the red button on the battery's BMS.
- Remove the Key and keep it in a safe place
- Ensure the tire pressure is set to 30 psi
- Clean the body, seats, battery box, and chassis
- If storing outdoors, cover the vehicle with a storage cover
- Check and charge the battery at least every few months, as the battery will naturally discharge over long periods of time.
- Monitor the battery cables for corrosion.
- Store the battery in a well-ventilated area with temperatures between 41°F and 104°F

Maintenance

The appropriate care must be used when performing maintenance, service, or accessory installation. Only trained technicians should service or repair the vehicle and/or battery charging system. Anyone doing even simple repairs or services should have knowledge and experience in electrical and mechanical repairs.

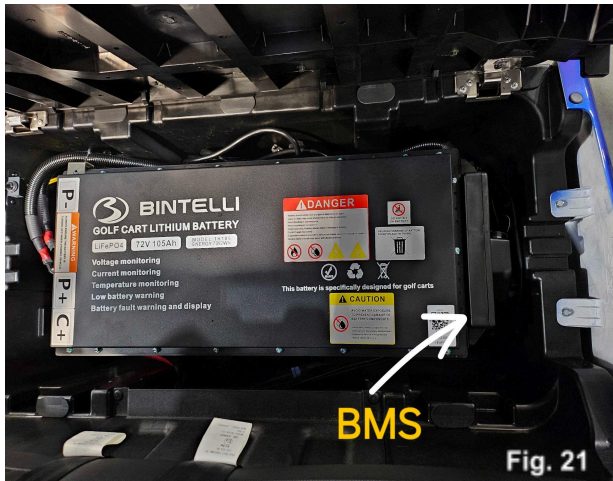
Warning

Before disconnecting or connecting the batteries, the Tow/Run switch must be in the “Tow” position. Failure to comply with this warning may result in battery failure leading to serious personal injury.

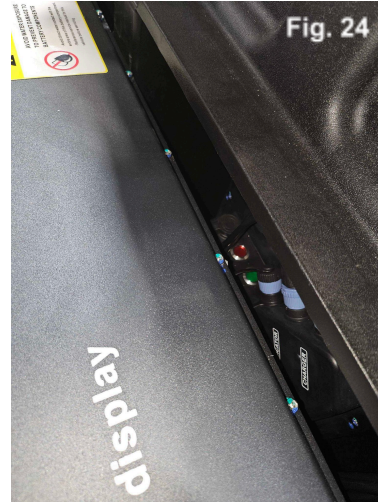
- When maintaining the vehicle or batteries, do not wear loose clothing or conductive jewelry such as rings, watches, and brackets.
- Insulated tools need to be used when working near the battery or power connections to prevent the cart from short-circuiting.
- Before working under the cart, make sure the parking brake is on, the cart is switched into the “Tow” position, and the key is removed from the ignition.
- Please keep all signs, warnings, and instructions provided by the manufacturer clear and untampered.

Battery Operation

The battery pack's power button is located on the Battery Management System module (BMS), **Fig. 21**. For 4 seat models equipped with a 105ah battery, the BMS is located on the passenger side of the battery. To turn the battery on, press the red “on/off” button, **Fig. 22**. In the on position, the button will be recessed. After pressing the red “on/off” button, press and hold the green “start” button for a few seconds. The battery will now supply power to the vehicle. To turn the battery off, push the red “on/off” button again. In the off position, the button will no longer be recessed.



The 6 seat model is equipped with a 165ah battery pack, the BMS is located in the battery compartment under the seat back in the battery compartment row of seats, **Fig. 23**. To turn the battery on, press the red “on/off” button, **Fig. 24**. In the on position, the button will be recessed. After pressing the red “on/off” button, press and hold the green “start” button for a few seconds. The battery will now supply power to the vehicle. To turn the battery off, push the red “on/off” button again. In the off position, the button will no longer be recessed.



Full battery power and range is available after 5-7 full battery cycles

If your Nexus will not be used for a period of 7 days or more, turn the battery off after use.

Important Notice

Before performing any maintenance to the batteries, it's essential to cut all power to the vehicle. **To turn off the power supply, make sure the cart is in park, turn the Tow/Run switch to “Tow”, and remove the key from the ignition.** Once this has been completed, routine maintenance may begin.

Always keep sparks and flames away from batteries including smoking.

Cleaning


Batteries can attract dust, dirt, and grime. Keeping them clean will help you spot signs of trouble if they appear, and avoid problems associated with grime.

Charging

To charge your Nexus battery, first ensure the ignition is in the off position, then insert the included charging cord into the battery charger power port located on the base of the battery compartment. Once plugged in, the battery charger will automatically charge the battery, and then turn off once the charge cycle is completed. When power is connected to the battery charger, the vehicle's display screen will show current battery percentage for a short period of time, and then go back into standby mode. To get this to show again, unplug the battery charger, wait 30 seconds, and then reconnect. There is also a battery charger status light on the dashboard. The chart below shows the light sequins, for more detailed information, please refer to the charger manual.

- Do not plug in, or unplug the charger while the vehicle's ignition is on.
- A dedicated 20 amp circuit is required for battery charging.
- If the distance to your power source is greater than the length of the included charging cord, only use a 10 gauge or larger extension cord of no more than 25'.
- The battery system will charge regardless of whether the battery is on or off.

The battery should be recharged each day and or after the vehicle is used. Lithium batteries do not have a “memory” and should not be fully discharged before charging.

Indicator Beacon	
Battery Indicator	Charging: Green blinking light
	Fully Charged: Green solid light
Fault Indication	Overvoltage: Red Green Red
	Overheating: Green Red
	Output under voltage: Red Green
	Input AC anomaly: Red Green Red Green Red
	Integrated fault: Green Red Green

Lithium Battery Care

Warning

Do not touch or attempt to secure terminal connection until the power is completely shut off to the vehicle. To disengage power, turn the tow/run switch to “tow”, remove the key, and locate the power button on the lithium battery and switch it “off”(Power button shown on Figure 3).

The Power switch on the battery must be **OFF** before any interaction.

Lithium Check:

- Cleaning cables and ensuring the surface is free of moisture and debris.
- Checking cables and securing connections to Battery.
- Recharging batteries.
- Monitoring inactivity, long term storage, and colder temperatures.

Although Lithium batteries do not require the same type of routine maintenance as Lead Acid, it is still strongly recommended to use the proper suggested care to maintain their efficiency. This includes the Lithium Checklist and more detailed information noted in the user manual.

It's important to be aware that improper management can void warranties and cause further issues with the service of your vehicle.

For additional questions and customer support, please contact your local dealer or Bintelli manufacturer.

Regular Maintenance Checklist

C=Check, CA=Check/Adjust, R=Replace, S=Perform, CL=Clean/Lubricate						
	Before Use	Every month/20 hours/ 100 miles	Every 6 months/125 hours/600 miles	Every year/250 hours/1200 miles	Every 2 years/500 hours/2500 miles	Every 4 years/1000 hours/5000 miles
Battery Charger	S	S	S	S	S	S
Clean batteries	S	S	S	S	S	S
Check brakes	C	CA	CA	CA	CA	CA
Check Steering	C	C	C	C	C	C
Check tires	C	CA	CA	CA	CA	CA
Check body	C	C	C	C	C	C
Battery discharge test				S	S	S
Replace rear axle lubricant				R	R	R
Clean and lubricate pedals		CL				

Client Responsibilities

Battery Cables – Tighten battery cables per battery manufacturer instructions located on batteries. Failure to tighten once a month could result in damage to the batteries. BEFORE placing the vehicle into service, please check all battery cables and tighten as they may become loose due to turbulence in shipping.

Charger Power Cord – Do not remove the manufacturer tag on the power cord as doing so will void the warranty. Always unplug the charger before turning the vehicle on.

Charging – Each charger must have a dedicated circuit with 20 amps. The vehicle should be left plugged in when not in use. The charger will trickle charge at 80% only when needed. Improper charging will lower the range.

Extension Cords – We do not recommend using an extension cord to charge. If you do use one, it must be heavy-duty (10 gauge) as the extension cord will determine how many amps the charger will receive.

Parking Brake – All vehicles have a parking brake (hand or foot). Driving with a parking brake engaged will damage the motor and braking systems and can create a fire hazard. Always disengage the parking brake before driving.

Storage – Vehicles should NOT be left out in the elements 24/7. We recommend storing covered in a garage environment in order to preserve the integrity of the paint and fit/finish of the vehicle.

Tires – Must be inflated to proper capacity. Upon delivery, please check all lug nuts and tighten them as they may become loose due to turbulence in shipping. Additionally, check lug nut tightness once a month.

Tow Switch – Must be pointed to “Run” and not “Tow” to operate. Must be in “Tow” position if towing.